
Laser cutter



Turning on and setting the focus

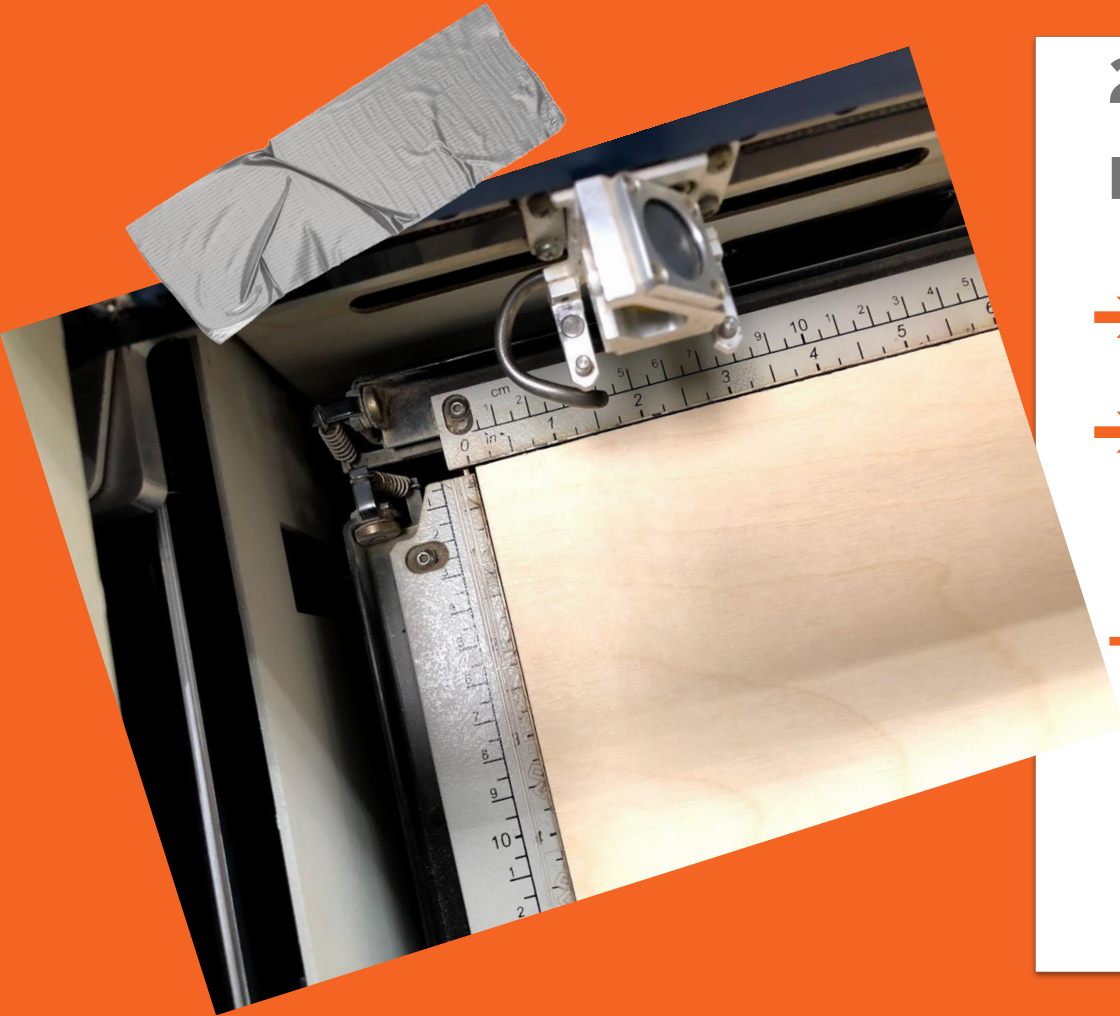
1. Turning on !

Turn on the laser with the button on the left



Make sure the aircon is on 5





2. Put the material in

- **Open glass**
- **Place the material on the grill**
- **Align**
Align the material with the lasers rulers

3. Focal point

- ◆ Put the focal point on the pins



4. Setting the focus

Important to prevent a fire hazard !

→ **Press X/Y off**

The lazer asks "X/Y off" ?

→ **Press Go**

The lazer will say "X/Y Disabled".

→ Now you can set the focus



5. Setting the height

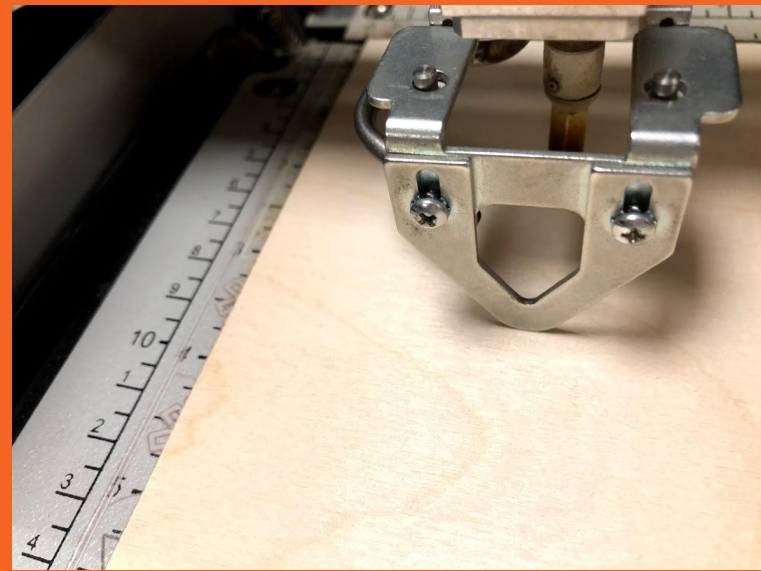
Important to prevent a fire hazard !

→ Setting the height

So the material and the iron touches

→ Push up/down

→ Return the focus iron





6. Turning on the pointer

→ **Turn on the pointer**

Then a green light will turn on

→ **Red pointer**

A red pointer will turn on where the laser will cut

7. Setting the starting point

→ Move the Y axis

By moving the blue axis with your hand

→ Move the lense

By holding one of the iron pins





8. Setting the starting point

→ **Press set home**

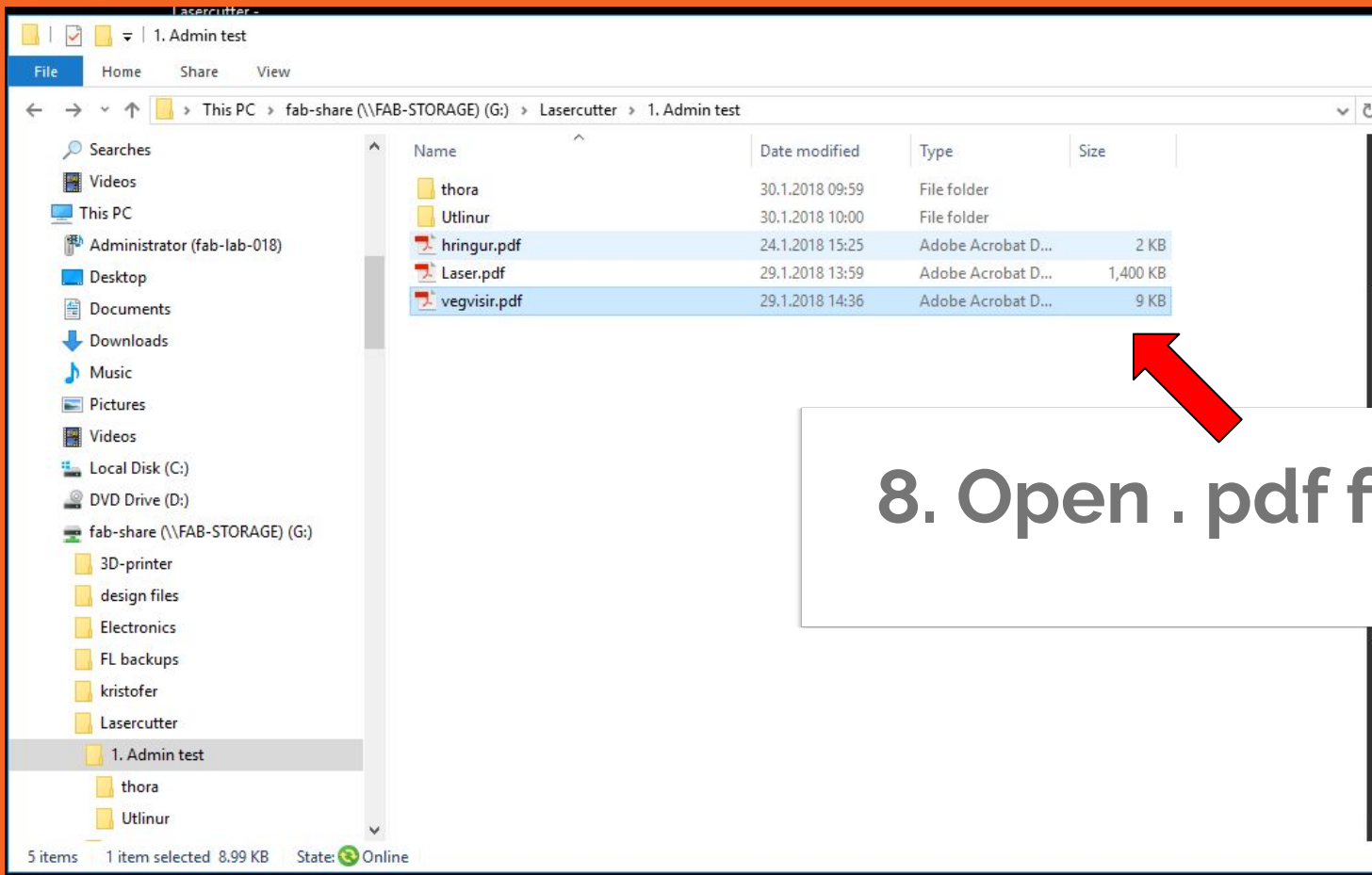
This will be the starting point

→ **Press Reset**

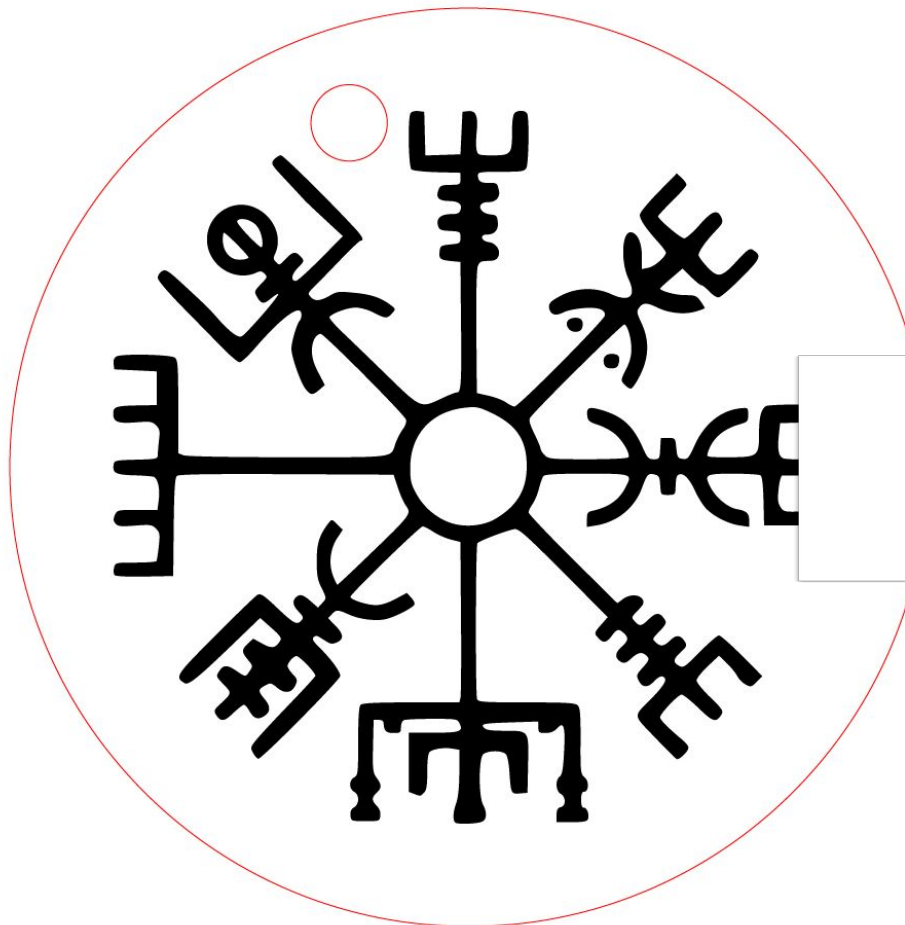
→ **Close glass**



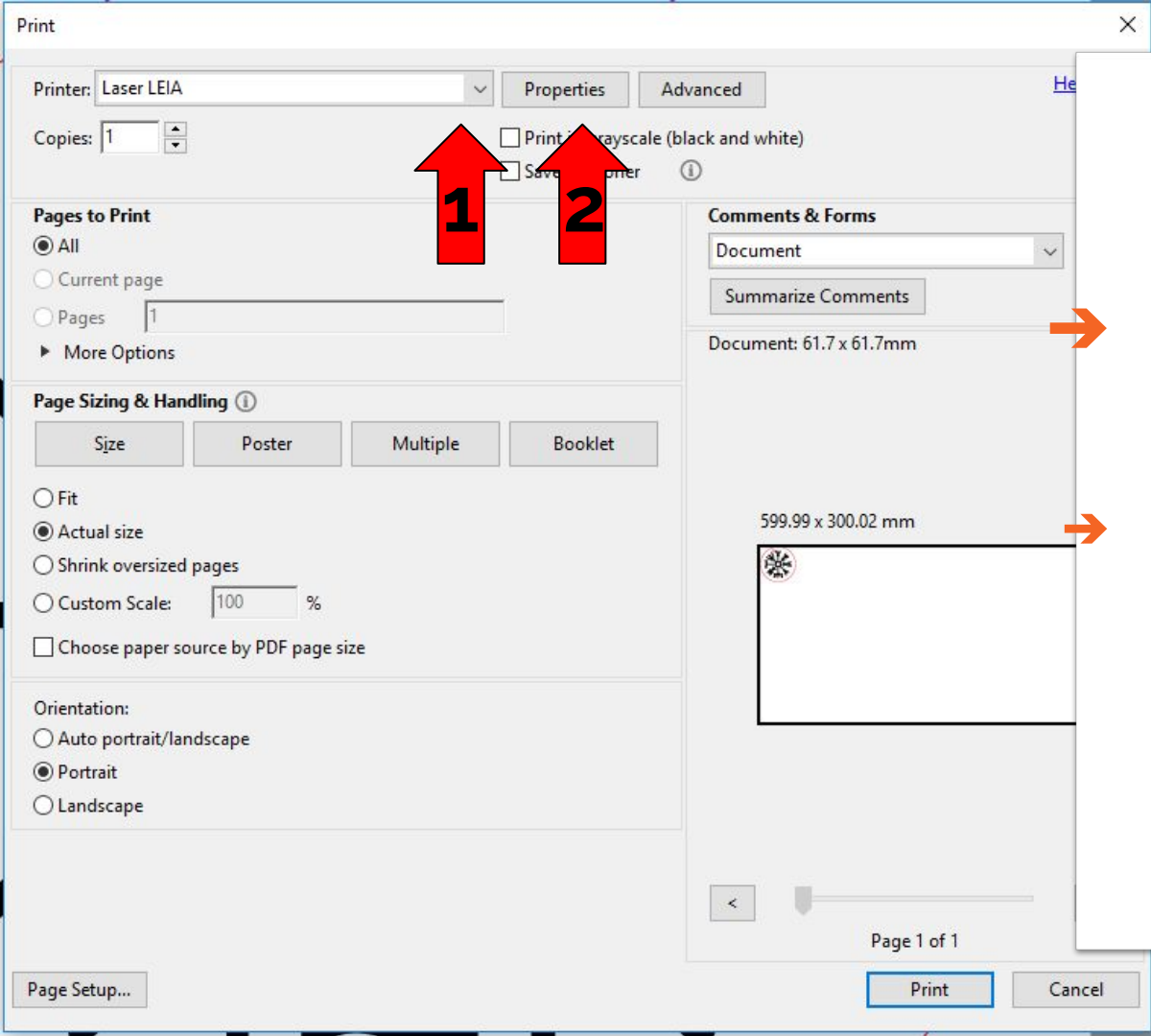
**Now you can move
on to the computer**



8. Open . pdf file



9. Press print



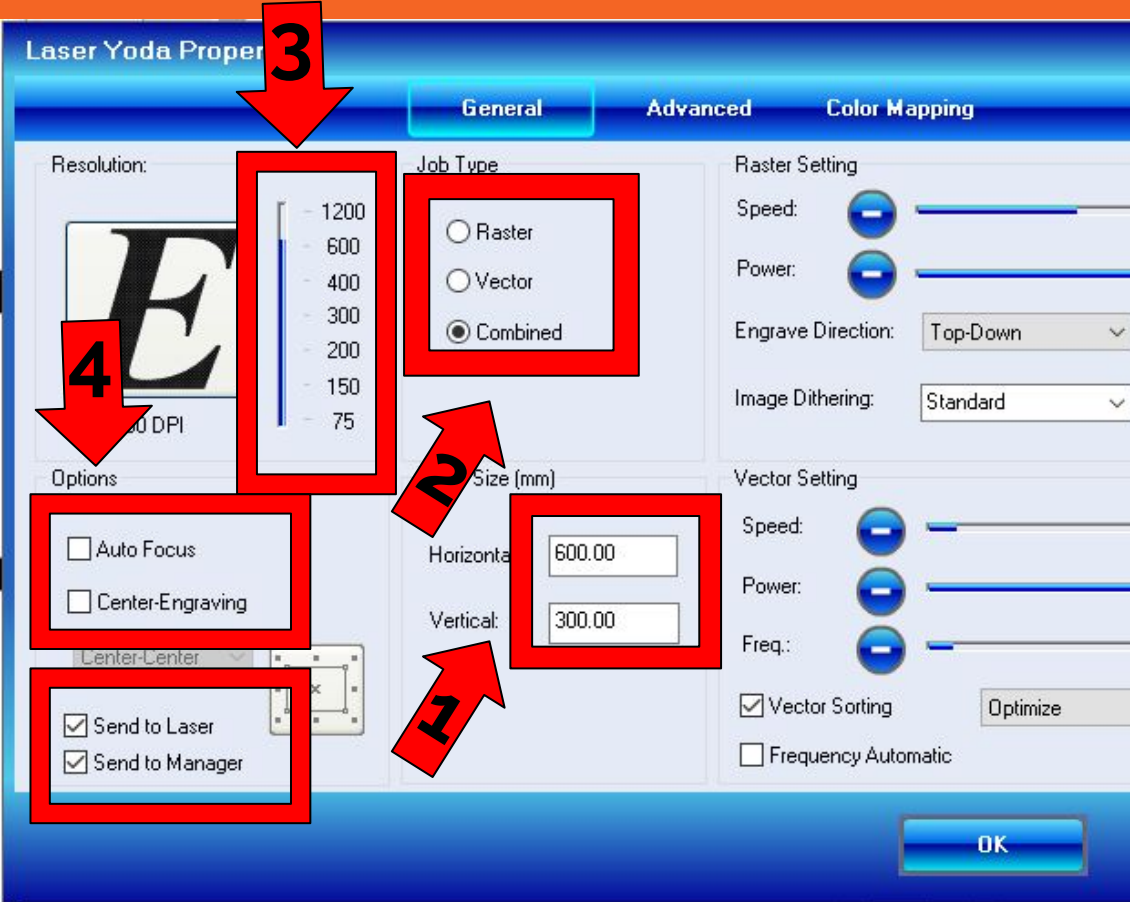
10. Settings

→ Choose the right printer/laser

→ Press Properties

11. Settings

1. Set size
2. Choose Combined
3. Set the dpi to 300-600
4. Check Options

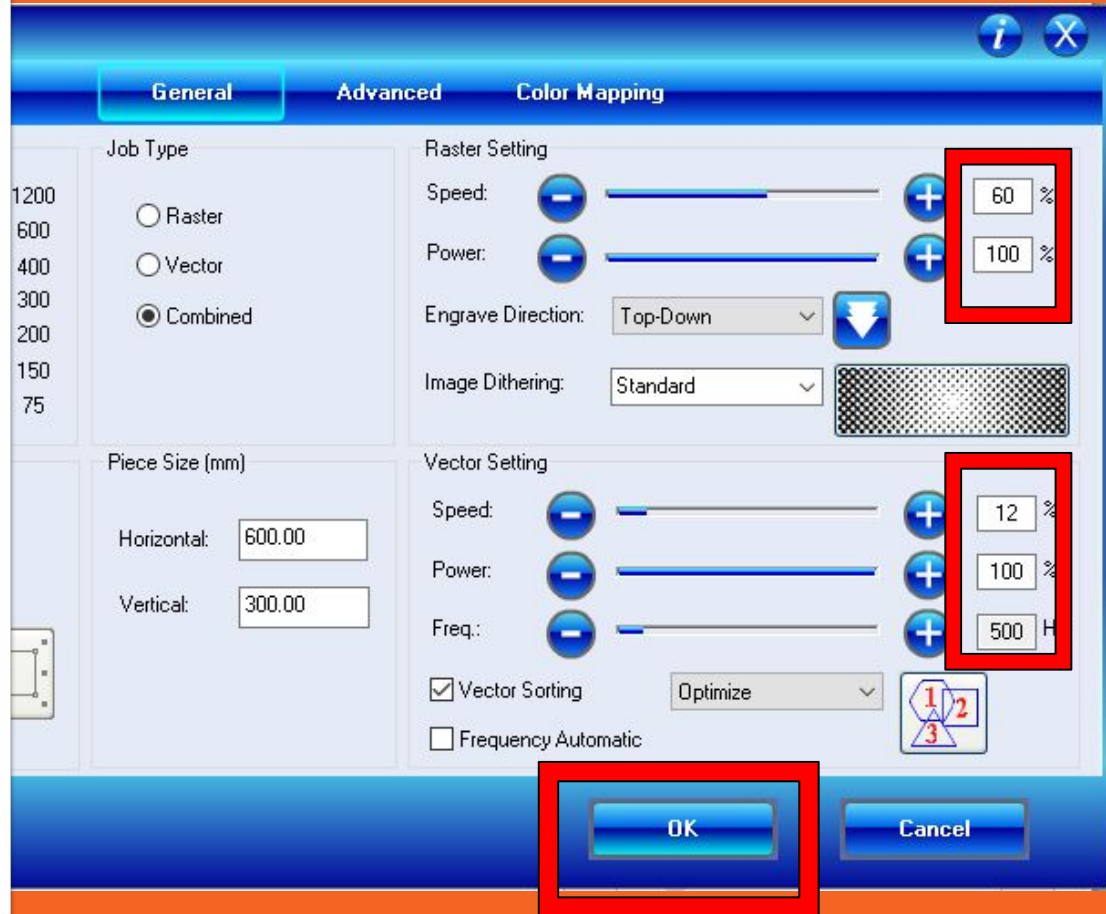


12. Settings

→ Set power, speed and frequency

→ These are the settings for wood

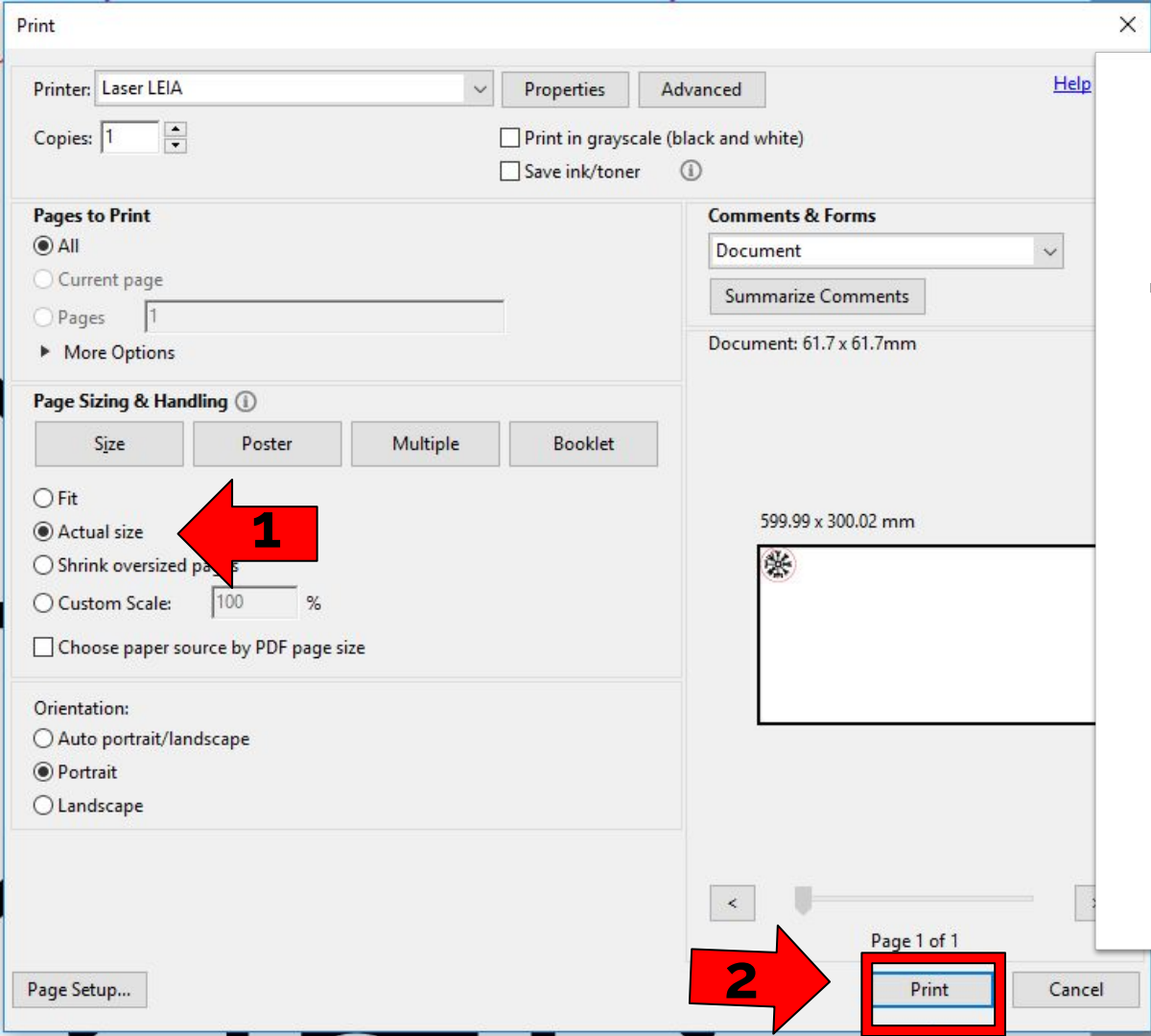
→ Press OK



13. Settings for different materials

	Raster	Vector
→ Plexy	100/50	12/100/5000
→ Wood	60/100	12/100/500

For more settings look at the wall in the laser room



14. Settings

→ Choose Actual Size

→ Press Print

15. Turn the air press on





16. Laser time !

→ The data is sent to the laser

A green light will turn on above Data and off when it is ready to start
Than you can....

→ Press the GREEN go button

The laser will start

17. Safety

→ Keep an eye on it

Keep an eye on the laser, if the material begins to burn you open the glass and the laser turns off

→ Opening the glass

When the glass is opened the laser head will still move

But the laser will turn
off

The laser will turn on again when the glass is closed